



*“Working together to protect life and property  
while serving our greater community.”*





## LWFR Commissioners:

- Rollie Schmitten, *Chairman*
  - Bill Gibbs
  - Mike Bunney
  - Jim Funke
- 

## Staff:

- Mick Lamar, Fire Chief
- Bill Moffat, Asst. Fire Chief
- Kay Cope, Administrative Coordinator
- Marlene Glover, Administrative Assistant

## Officers:

- Kelly McDaniels
- Mike Stanford
- Steve Foley
- Drew Sahlinger

*“One Team, One Plan, Striving For Excellence”*





## Cascade School Board Commissioners:

- Carrie Sorensen, *Chairman*
- Brenda Biebesheimer, *Vice Chair*
- Kristen Wood
- Jennifer Pickel
- Cindy Puckett



Bill Motsenbocker  
Superintendent

Kenny Renner-Singer  
Principal  
Beaver Valley Elementary

Heidi Flake  
Kindergarten Teacher  
Beaver Valley Elementary

Eric Tiegel  
1<sup>st</sup>-4<sup>th</sup> Grade Teacher  
Beaver Valley Elementary





## **NOTICE OF PUBLIC MEETING**

**Lake Wenatchee Fire & Rescue (LWFR) will hold a Public Meeting to discuss the potential acquisition of property near the Plain Fire Station**

**DATE: NOV. 6, 2017**

**TIME: 7PM**

**LOCATION: 21696 LAKE WENATCHEE HWY  
STATION 91**

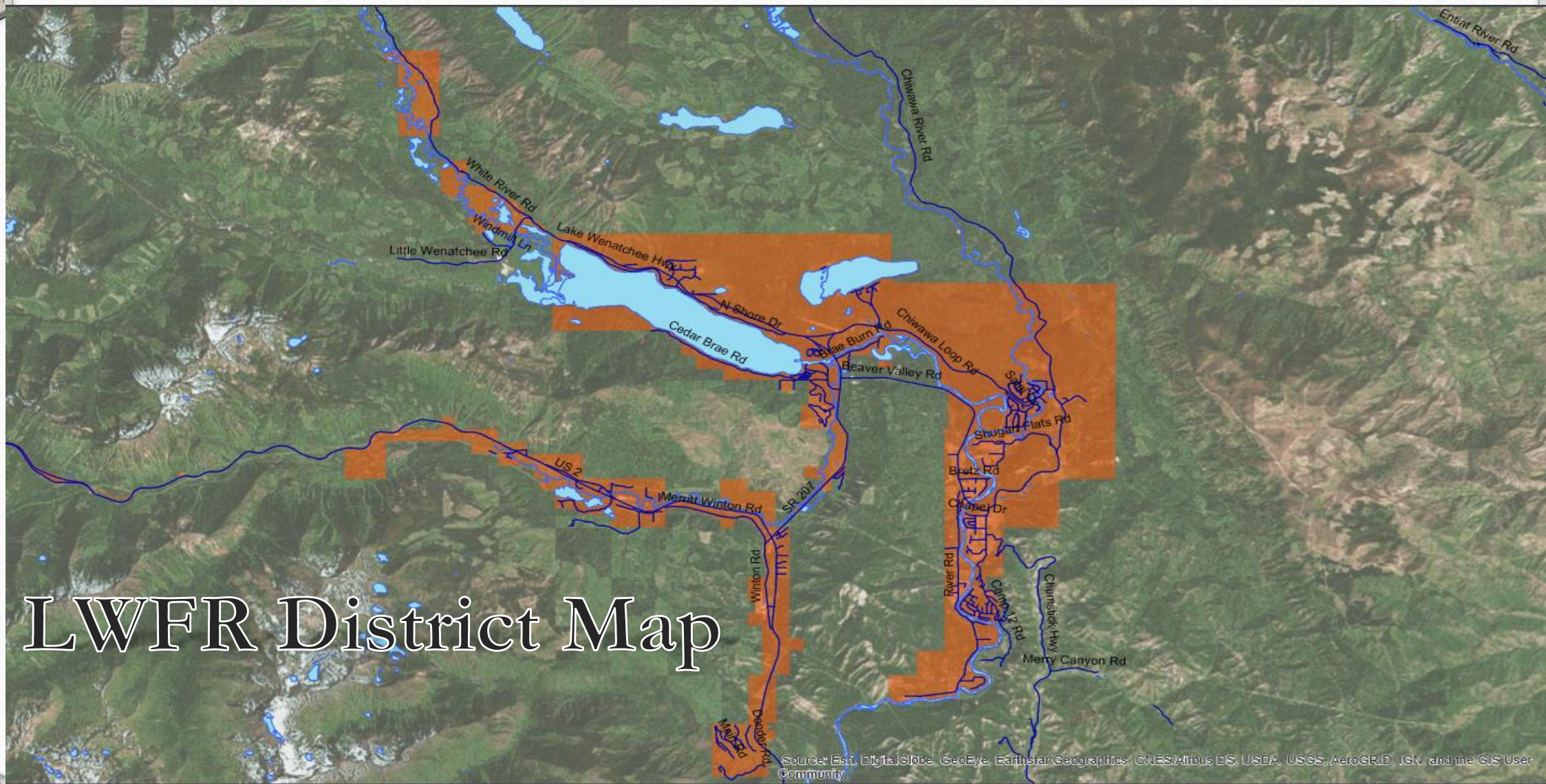
**The LWFR Strategic Plan identified the need to expand current facilities to improve the delivery of vital community services. Our existing stations do not provide adequate space or features to meet the growing needs of our firefighters or the community.**

**After a thorough review of our current facilities and response zones, we reached out to the Cascade School District about the potential to purchase a 6.63 acre parcel on Hill Street. This parcel shares a common boundary with the existing station in Plain. The School District has identified plans to surplus the property and would consider selling to LWFR.**

**LWFR and CASCADE SCHOOL DISTRICT representatives would like to meet with you to discuss the potential property acquisition and how this property would fit with LWFR long term plans.**



# LWFR District Map



Source: Esri, DigitalGlobe, GeoEye, Earthstar Geographics, CNES/Airbus DS, USDA, USGS, AeroGRID, IGN, and the GIS User Community



# LWFR Stations

STATION  
91



STATION  
92



STATION  
93

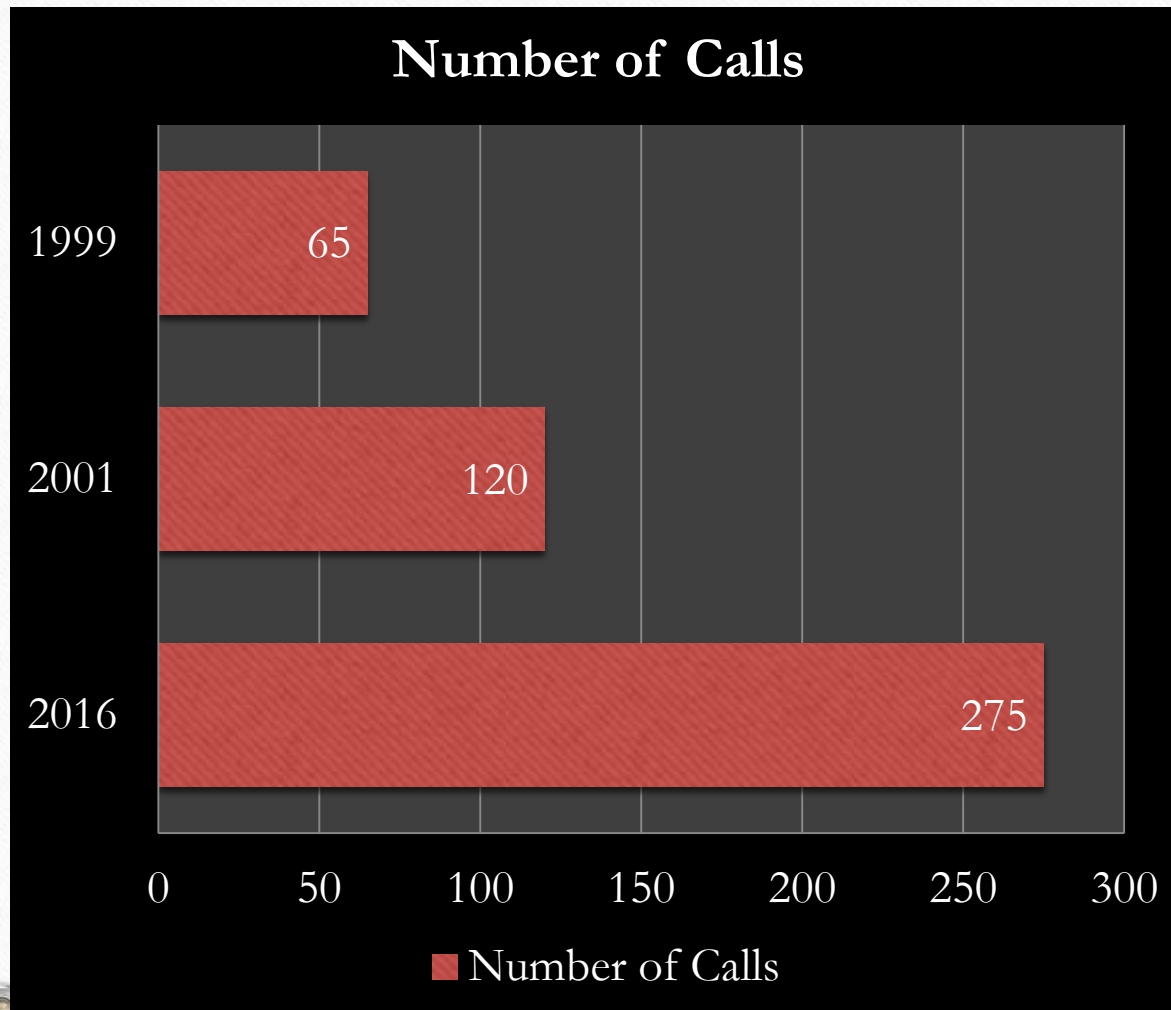


STATION  
94





# Increasing Demands







## Acknowledgements

### Citizen Planning Team

- Mick Lamar
- George Wilson
- Jimi Wilson
- Mike Stanford
- Jim Fosse
- Tom Baranouskas
- Jim Hopkins
- Dennis Broughton
- Brad Ulrich
- Brian Pulse
- Bob Jennings
- Keith Goehner
- Jim Passage
- Trevor Wylte

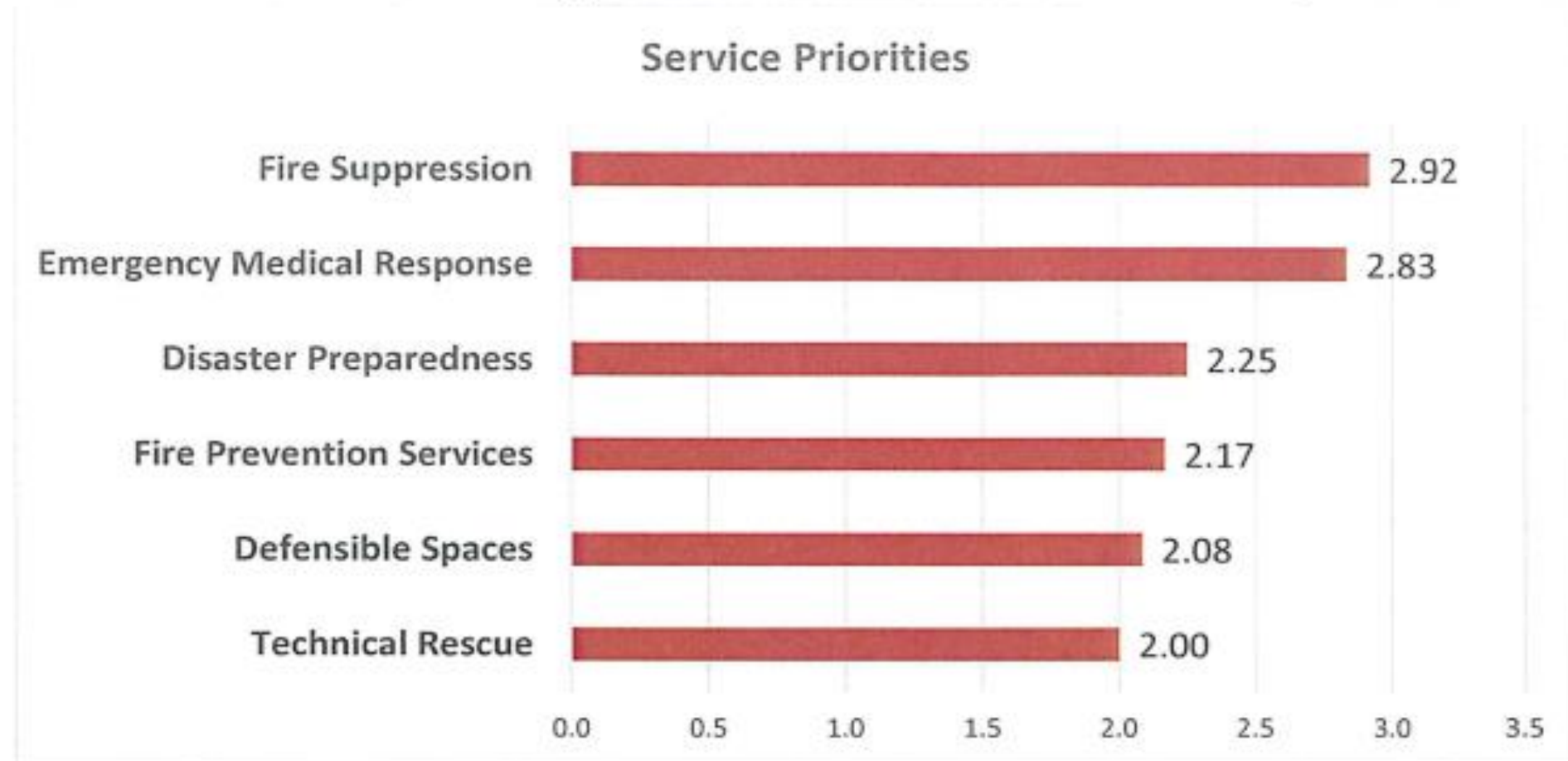
### Internal Planning Team

- Mick Lamar
- Michael Stanford, Jr.
- Mike Bunney
- Terri Woods
- Rollie Schmitten
- Steve Foley
- Steve Saugen
- George Wilson
- Chuck Kocher
- Mike Payne
- Kelly McDaniels
- Bob Jennings
- Bill Moffat
- Dennis Broughton
- Kelly O'Brien





Figure 2: Citizen Service Priorities







## Strategic Plan

### **Initiative 1 – Capital Facilities & Equipment**

Lake Wenatchee Fire & Rescue (LWFR) requires critical infrastructure and physical assets in order to adequately perform the services expected by the community. This includes facilities that support the district's mission; emergency apparatus for crews to respond with and which fits the risks in the community; the necessary equipment to perform the tasks required; and appropriate safety gear for each member of the district who places themselves in harm's way to provide the service. This initiative contains the goals and objectives related to these critical elements.



**Goal: 1A Develop a Facilities Management Plan**

**Objectives**

1. *Assess current facilities to determine suitability for current use*

Responsible: Facility Assessment Team

Timeline: Critical Task

Outcome: Each LWFR facility has a descriptive list of capabilities that are currently in place

2. *Identify best practices in the Fire Service as it relates to features/age/maintenance of critical facilities*

Responsible: Facility Assessment Team

Timeline: Short-term

Outcome: A complete list of industry standards, best practices, and considerations is compiled

3. *Conduct a GAP analysis between the current conditions and the industry best practices*

Responsible: Facility Assessment Team

Timeline: Short-term

Outcome: A table is created which compares each industry standard or best practice with the corresponding current condition of existing LWFR facilities

4. *Determine the appropriate course of action and priorities (repair, remodel, replace)*

Responsible: Facility Assessment Team

Timeline: Mid-term

Outcome: Each facility is placed into one of the three courses of action and listed in priority order

5. *Develop conceptual design for facilities determined to need to be replaced or remodeled*

Responsible: Facility Assessment Team

Timeline: Mid-term

Outcome: A conceptual design has been created for each facility needing to be replaced or remodeled

6. *Obtain community input to capture opportunities to provide multi-use facility*

Responsible: Facility Assessment Team

Timeline: Mid-term

Outcome: Broad community feedback has been provided that identifies preferred additional uses for LWFR facilities

7. *Develop a budget & identify funding options - grants, bonds, partner with other agencies*

Responsible: Facility Assessment Team

Timeline: Mid-term

Outcome: Funding sources have been identified and a proposed budget created for board consideration

8. *Develop a timeline for the capital projects identified*

Responsible: Facility Assessment Team

Timeline: Mid-term

Outcome: A schedule has been created for all identified capital projects for board consideration





# Back in the Day...







## Station 91

21696 Lake Wenatchee Hwy

*Leased for 40yrs from State Parks*

# Station Ownership



## Station 93

*19015 Beaver Valley Rd.*

*Own-Purchased in 1989*



## Station 92

2327 Pine Tree Rd.

*Own-Deeded in 1988*

## Station 94

*21300 Cayuse St.*

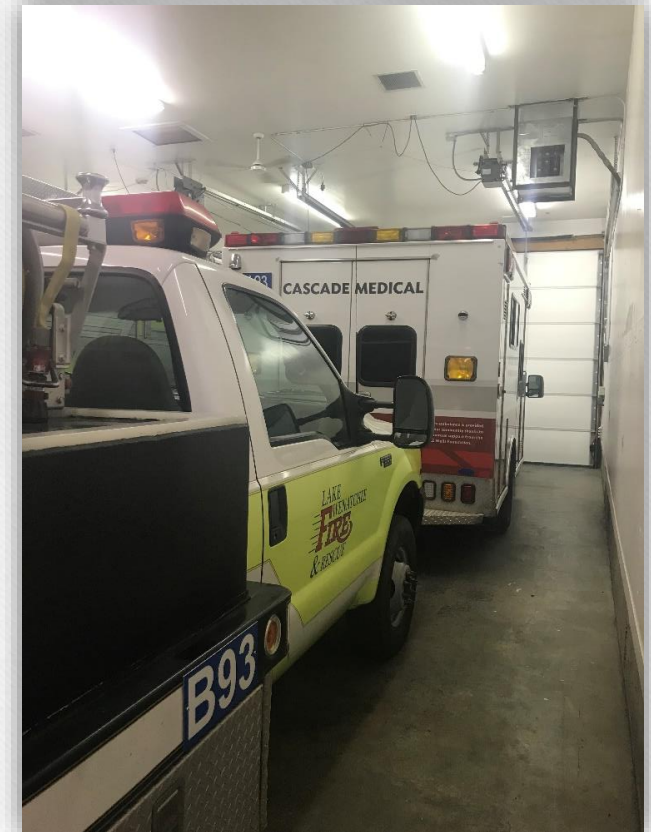
*Leased for 25yrs from Ponderosa*



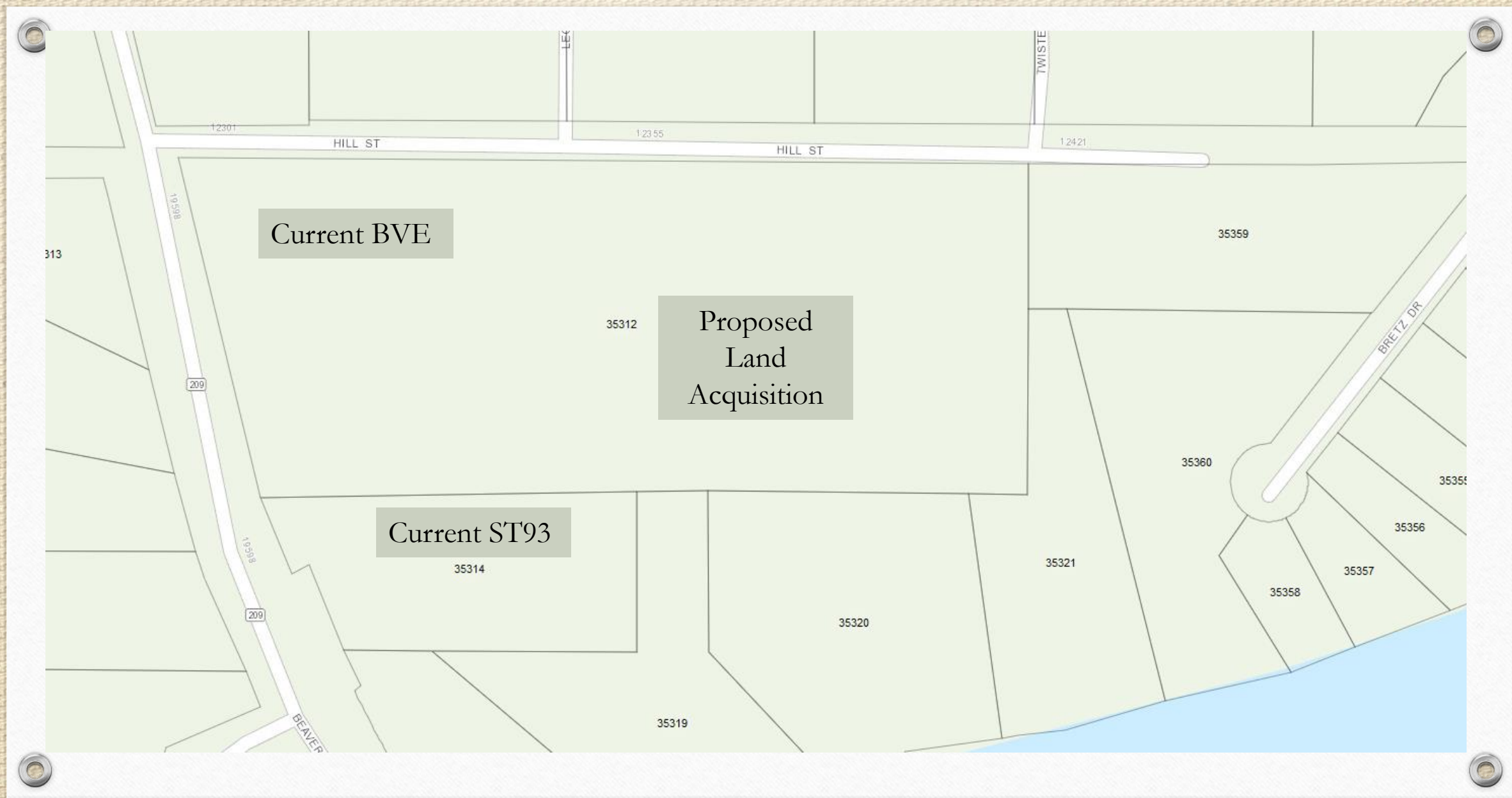


# Current Challenges

- Training Spaces
- Equipment Storage
- Vehicle Storage
- Multi-Use
- Environmental
- Safety
- Aux. Power
- Health & Wellness
- PPE Storage
- Extractor
- Exhaust
- Fitness











# Steps To Meet Needs:

---

- 1.) Review Current Locations for Expansion
- 2.) ID Potential New Sites
- 3.) Develop/Design
- 4.) Obtain Financing



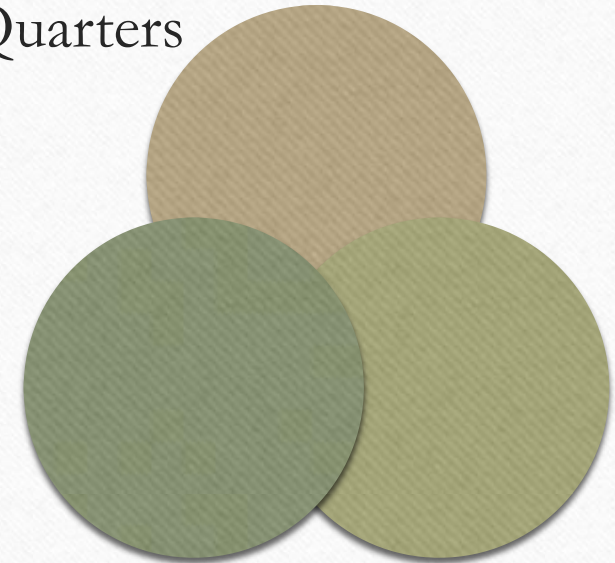
# Potential Users

## External:

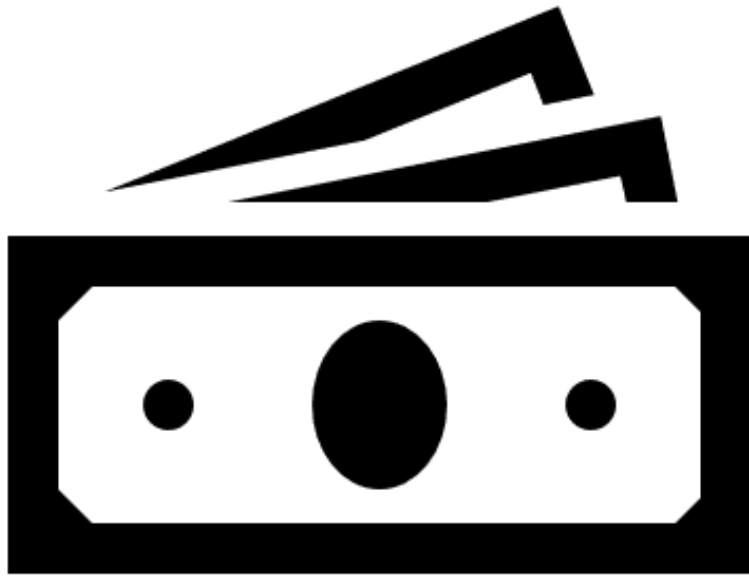
- Cascade Medical
- Chelan County Sheriffs Office
- Emergency Operations Center
- Incident Management Team
- Fire Adapted Communities
- Auxiliary

## Internal:

- Training
- Sleeping Quarters
- Groups
- Storage







# Financing

---

After consultation with legal and financial counsel, the Board of Fire Commissioners have agreed, in principle, to use councilmanic funding to finance the land acquisition.



# Questions?

---

